

The Roving Artists

January 11 to February 19



The Roving Artists is a group of 18 diverse artists. Currently they meet each week ten months of the year. During the two summer months they meet at various picturesque locations enjoying en plein air painting, weather permitting. The group has been meeting for over fifteen years at various venues.

Each member of the group pursues his or her own style and subject matter, often exploring and experimenting with new techniques. The media they employ include oil, acrylics, watercolours, pastels and inks. The subject matter is equally diverse including landscapes, seascapes, still life, portraits and on a whimsical note, cartoons. The major impetus guiding the artists is the freedom of approach and the inspiration of confreres that has attracted this group of artists to meet on a regular basis.

To give those who wish to hone their skills in figure drawing, members take turns modeling one week and on alternate weeks artists may present their work for critique by fellow artists.

Elements

February 22 to April 02



A natural amalgam of pottery, masks and wood linking the humankind to nature and the Divine through the physical substances and spiritual essences of Earth, Air, Fire and Water.

Chris Allan expresses environmental concerns and a love of literature and philosophy in her art which includes striking decoupage techniques. "... encouraged by the West Coast Nuu-Chah-Nulth of Ahousat, BC, where I lived for two years."



Ray & Bev Niebergall worked with Los Mapuches, First Nations people of Patagonia for 8 years. In 2003, they built their Pottery Studio in Roberts Creek. "Touching clay brings us back to our roots, back to our humanity and re-connects us to our Creative Spirit."

Carlie Sanford is inspired by her environment, Art Nouveau and Surrealism. She is a graduate of the Kootenay School of the Arts, as is **Timothy Niebergall** has lived in Argentina and Toronto. He now lives in Roberts Creek where he hopes to teach and explore more collaborative works.



Enigma: A Selection of Photographic Works

April 05 to May 07

Film and digital photographers were encouraged to make submissions to this exhibition.

Getting Inside ... viewers experienced Daniel Bouman's installation of a walk-in pinhole camera and signed up for pinhole photography workshops in time for World Wide Pinhole Photography Day which is held annually on the last Sunday in April. Check it out at pinholeday.org.

Marleen Vermeulen: West Coast Impressions

May 10 to June 25



Impressions: trees growing on misty hillsides, clouds floating above rippling waters, and logs lying like toppled sentinels on beaches of the Sunshine Coast.

BRITISH COLUMBIA: *New Works*, May 27 to June 11, Kurbatoff Art Gallery, Vancouver

A funny thing happened to Marleen Vermeulen when she moved to the West Coast 15 years ago. The Dutch-trained artist, who had been painting small abstracts, began instead to create large impressionist paintings from her studio on the Sunshine Coast. Vermeulen's new environment, so unlike anything she had encountered in densely populated Holland, led her to want more 'shape' in her art. "I was blown away and inspired by the space around me," she says. "I felt I had been thrown here in the middle of nowhere. I had to re-invent myself and I embraced it fully." The new paintings started with figurative works, but soon gravitated to the seascapes and landscapes that Vermeulen encountered around her. Her palette became dominated by earth tones, with blues and grays in seascapes, and ochre and greens in forest landscapes. She describes it as "a very West Coast palette." Vermeulen also works with strong textures, the contrast between smooth and textured brushstrokes adding depth. The size of her oil and canvas works also distinguish them. The 11 new paintings at Kurbatoff Art Gallery this summer range from 6 feet by 4 feet, to square canvases of 4 feet by 4 feet.

— *Beverly Cramp* **Represented by: Kurbatoff Art Gallery, Vancouver B.C.**

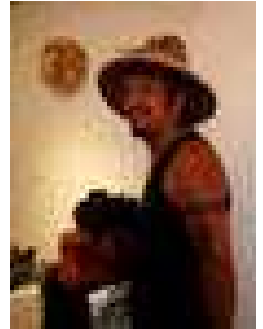
Squamish Nation Invitational

August 16 to October 08



This area of the Sunshine Coast is part of the traditional home of the Squamish Nation and GPAG was proud to present a rich multi-medium exhibition including visual arts - carving, painting, basket weaving - and music and dance

Artists - Eric Baker, Richard Baker, Cedric Billy, Ian Billy, Dominic Charlie (deceased), Rick Harry, Benny Joseph (deceased) , Floyd Joseph, Cody Matthias, Leona Nahanee, Keith Nahanee, Loni Williams



Artist/Curator - Wes Nahanee



Special thanks to GPAG Liaison, Ed Hill

This significant exhibition was made possible with the generous financial support of Gibsons Building Supplies and St. Bartholomew's Anglican Church.

